



www.lanagrossa.com

PULLOVER · COOL WOOL BIG
Design 22 from Merino Edition

PULLOVER · COOL WOOL BIG

Design 22 from Merino Edition



www.lanagrossa.com

Size 36/38 (40/42, 44/46, 48/50)

Instructions are given for first size. Figures in parenthesis refer to larger sizes. When only one figure is given, it applies to all sizes.

Materials: 550 (600, 650, 700) g of Lana Grossa **Cool Wool Big** (100% pure wool; 120 m/50 g) in Chestnut (col 964). Size 4.5 mm needles; size 4.5 mm circular needle, 40 cm long; cable needle [cn].

Rib patt: K2, p2.

St st: K on RS, p on WS.

Cabled raglan decreases: Work according to chart A or B. Numbers at right edge of charts indicate RS rows; on WS rows, purl all sts. Rep rows 1 – 6.

Full-fashion dec: At beg of RS row, selvage st, k2tog; at end of RS row, work to last 3 sts, skp, selvage st.

Gauge: 20 sts and 28 rows = 10 x 10 cm in St st on size 4.5 mm needles; 15-st raglan cable = 5.5 cm wide.

Back: With size 4.5 mm needles cast on 110 (118, 126, 138) sts. Next row (WS): Selvage st, p1, * k2, p2; rep from * to last 4 sts, k2, p1, selvage st. Cont in rib patt as established until piece meas 2 cm from cast-on, ending with a WS row. Work in St st and shape sides as foll: Working full-fashion dec, dec 1 st at each end of 13th row, then every 14th row 5 (5, 4, 5) times = 98 (106, 116, 126) sts. Work even until piece meas 44 cm from cast-on, ending with a WS row. Shape raglan: Bind off 4 (5, 6, 7) sts at beg of next 2 rows = 90 (96, 104, 112) sts. Next row (RS): Work cable chart A over first 15 sts, work in St st to last 16 sts, work cable chart B to end = 88 (94, 102, 110) sts. Cont in patt as established for 52 (56, 60, 64) more rows. Bind off rem 36 (38, 42, 46) sts.

Front: Work same as back to raglan. Shape raglan: Bind off 4 (5, 6, 7) sts at beg of next 2 rows = 90 (96, 104, 112) sts. Next row (RS): Work cable chart A over first 15 sts, work in St st to last 16 sts, work cable chart B to end = 88 (94, 102, 110) sts. Cont in patt as established for 48 (52, 56, 60) more rows. Bind off rem 42 (44, 48, 52) sts.

Left sleeve: With size 4.5 mm needles cast on 50 (52, 54, 56) sts. Next row (WS): Selvage st, p1, * k2, p2; rep from * to last 4 sts, k2, p1, selvage st. Cont in rib patt as established until piece meas 2 cm from cast-on, ending with a WS row. Work in St st and shape sleeve as foll: Inc 1 st at each end of 9 (7, 5, 5)th row, then every 10th row 10 times (then every 8th row 12 times / then every alt 8th and 6th row 14 times / then every 6th row 16 times) = 72 (78, 84, 90) sts. Work even until piece meas 44 (44, 42, 42) cm from cast-on, ending with a WS row. Shape sleeve cap: Bind off 4 (5, 6, 7) sts at beg of next 2 rows = 64 (68, 72, 76) sts. Working full-fashion dec, dec 1 st at each end of next 24 (26, 28, 30) RS rows = 16 sts. Work 1 WS row. Next row (RS): Dec 1 st as established, work to end. * Next row (WS): Bind off 3 sts, work to end. Next row (RS): Dec 1 st as established, work to end. Rep from * 1 more time. Next row (WS): Bind off rem 7 sts.

Right sleeve: Work same as left sleeve, reversing cap shaping.

Finishing: Pin pieces to measurements and block. Sew raglan, side and sleeve seams. **Neckband:** With size 4.5 mm circular needle, pick up and k 96 (100, 104, 108) sts evenly around neck edge. Join for working in rnds. Work rib patt in rnds for 4 cm. Bind off all sts in rib.

PULLOVER · COOL WOOL BIG

Design 22 from Merino Edition



www.lanagrossa.com

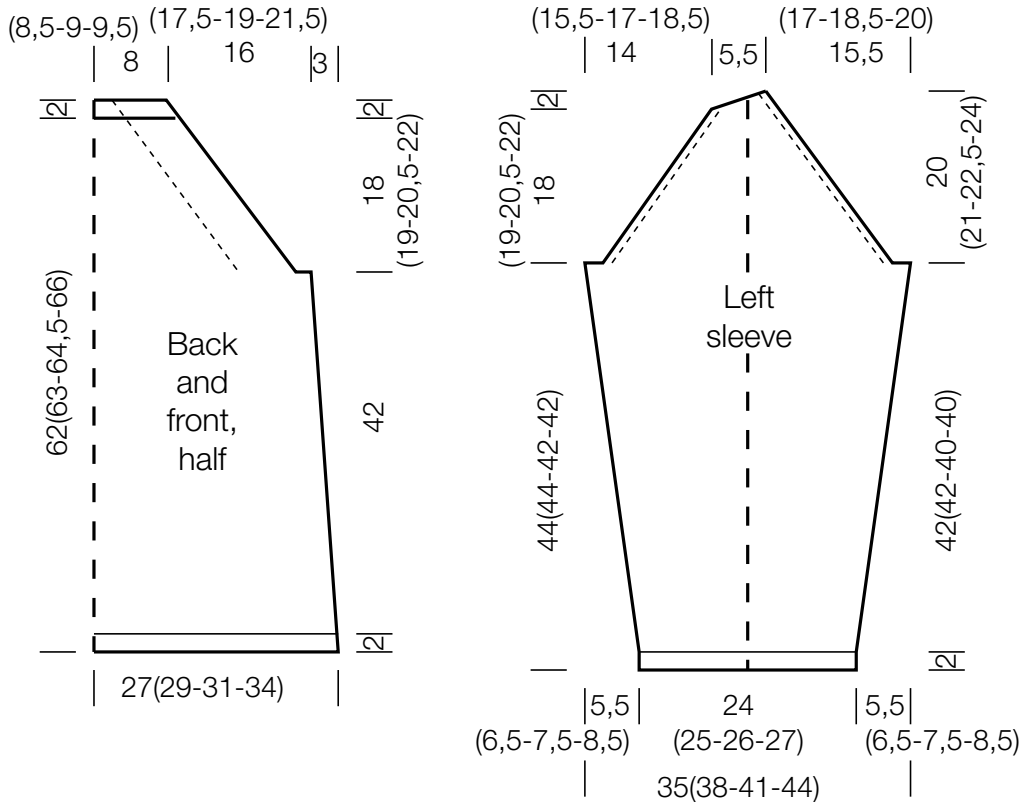


Chart B

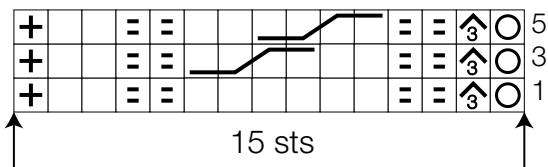


Chart A

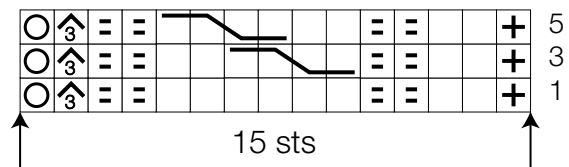


Chart key:

+ = selvage st

□ = k1

○ = yo

▢ = p1 on RS and WS

⌞ = s2kp (sl 2 kwise, k1, pass slipped sts over knitted st)

⌞ = sl 2 sts to cn and hold in front of work, k2, then k2 from cn

⌞ = sl 2 sts to cn and hold in back of work, k2, then k2 from cn

Gauge Swatch

Before you begin ...

...make a gauge swatch. Use the recommended needles, yarns and pattern stitch for your gauge swatch. It should measure approx. 12 cm x 12 cm. Cast-on and bind-off rows, as well as selvage stitches should not be included in the measurement. Pin your swatch and block it as you would the finished pieces of the garment. Count stitches and rows over 10 cm. If your gauge swatch is too small, switch to larger needles. If your gauge swatch is too big, switch to smaller needles.



Abbreviations

beg = begin(ning) · **ch** = chain · **cont** = continue · **dec** = decreas(e)(ing) · **inc** = increas(e)(ing) · **k** = knit · **kwise** = as if to knit
meas = measures · **M1L** = lift strand between sts from front to back and knit this strand through the back loop · **M1R** = lift strand between sts from the back and knit this strand through the front loop · **patt** = pattern · **pm** = place marker · **p** = purl
pwise = as if to purl · **rem** = remain(ing) · **rep** = repeat(s) · **rev St st** = reverse stockinette stitch · **rnd(s)** = round(s) · **RS** = right side · **sc** = single crochet · **skp** = slip 1 stitch as if to knit, knit 1 stitch, pass slipped stitch over knitted stitch · **sk2p** = slip 1 stitch as if to knit, knit 2 together, pass slipped stitch over knitted stitch · **s2kp** = slip 2 stitches as if to knit, k 1 stitch, pass slipped stitches over knitted stitch · **sl** = slip · **st(s)** = stitch(es) · **St st** = stockinette stitch · **tbl** = through the back loop · **tog** = together · **wyib** = with yarn in back of work · **wyif** = with yarn in front of work · **WS** = wrong side · **yo(s)** = yarn over(s)

Publisher's Info

Publisher: Lana Grossa GmbH, Gaimersheim, www.lanagrossa.com

Photographer: Olaf Szczepaniak